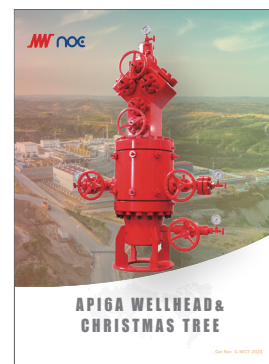


Product Summary



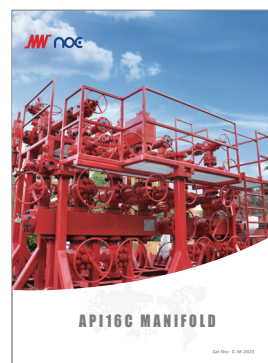
Subsea Products



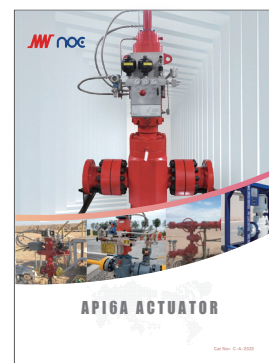
WLLHEAD & CHRISTMAS TREE



API 6A GATE VALVE



MANIFOLD



Actuator and control system



To be a Global Leading Manufacturer of Flow Equipment
Complete Solutions for Smart High Pressure Flow Equipment

Neway Oil Equipment (Suzhou) Co., Ltd
Address: No.999 Xiangjiang Road,
Suzhou New District, P.R.China
Tel: 0512-6708-1952
Email: noe@neway.com.cn
Website: www.newayoilequipment.com
Post: 215129



WEBSITE



WECHAT

API16C Manifold

Choke & Kill Manifold

Choke and kill manifold is a supporting device of the blow-out preventer, which will be connected to the two sides of the four-way drilling spool. By switching the plate throttling cycle and blowout can be realized, and the pressure difference between drilling pressure and casing can be adjusted, which is a supporting tool for balanced drilling or under balanced drilling, and is a necessary equipment for successfully controlling well surge and implementing oil and gas well pressure control technology.

Product Scope

- **Size:** 2-1/16", 2-9/16", 3-1/8", 4-1/16"
- **Pressure:** 5000psi, 10000psi, 15000psi
- **Material Level:** DD, EE、FF, HH
- **Temperature Rating:** L, N, P, S, U, V, X
- **Product Specification Level:** PSL3 (G)
- **Product Performance Requirement:** PR1

Client performance



Kill manifold



Saudi Project

Standpipe Manifold

Offshore platform mud riser manifold is a special supporting equipment for offshore platforms. It is used to collect and transport the drilling mud discharged by the mud pump, and is the necessary equipment to improve the drilling speed in high-pressure jet drilling. It is mainly composed of mud valve, choke valve, riser, union, pressure sensor, etc.

Product Scope

- **Size:** 3-1/16", 4-1/16", 5-1/8"
- **Pressure:** 7500psi, 10000psi
- **Material Level:** DD, EE、FF, HH
- **Temperature Rating:** P, U, S, T, U, V
- **Product Performance Requirement:** PR1



Client performance



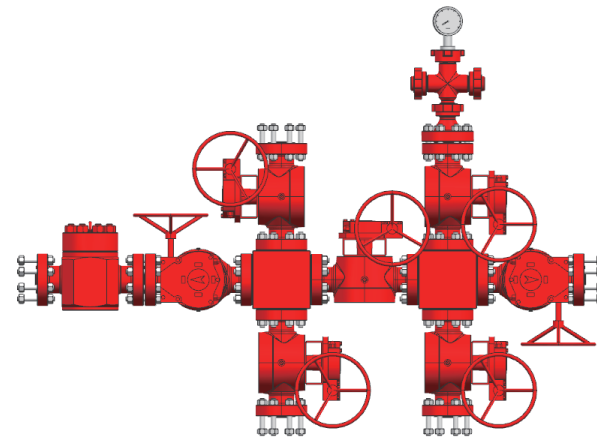
- ▶ **User:** COSL
- ▶ **Size:** 5-1/8"
- ▶ **Pressure:** 10000 psi
- ▶ **Project Location:** Saudi
- ▶ **Project Name:** Seeker Platform Suitability Transformation

Cement Manifold

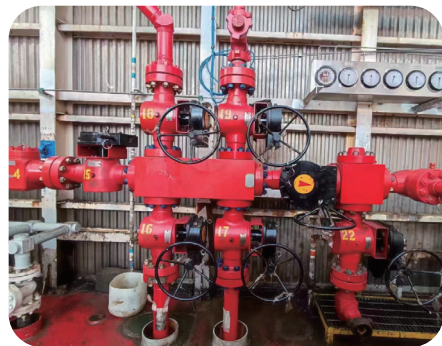
The cement manifold is used to control the cement discharged by the cementing pump to be transported to the wellhead, and the cementing operation valve adopts a plug valve, which has a small opening torque, and can be opened freely in the normal temperature and low temperature environment, and the operation is flexible.

Product Scope

- **Size:** 2-1/16", 2-9/16", 3-1/16"
- **Pressure:** 10000psi, 15000psi
- **Material Level:** DD, EE, FF, HH
- **Temperature Rating:** L, N, P, S, T, U, V, X
- **Product Performance Requirement:** PR1



Client performance



- ▶ **User:** COSL
- ▶ **Size:** 3-1/16"
- ▶ **Pressure:** 10000 psi
- ▶ **Project Location:** Saudi
- ▶ **Project Name:** Hunter Platform

Drilling Balance Manifold

By switching the plate valve on the manifold and adjusting the opening size of the throttle valve, the throttling cycle and blowout can be realized, and the pressure difference between drilling pressure and casing can be adjusted to balance drilling or under balance drilling supporting tools, which is the necessary equipment for successfully controlling well surge and implementing oil and gas well pressure control technology.

Product Scope

- **Main Diameter:** 2-9/16", 3-1/16, 4-1/16"
- **Side Diameter:** 2-1/16", 3-1/16"
- **Pressure:** 5000psi, 10000psi, 15000psi
- **Material Level:** DD, EE, FF, HH
- **Temperature Rating:** L, N, P, S, T, U, V, X
- **Product Specification Level:** PSL3 (G)
- **Performance Requirement:** PR1, PR2

Client performance



- ▶ **User:** SLB
- ▶ **Size:** 3-1/16", 4-1/16"
- ▶ **Pressure:** 10000 psi
- ▶ **Project Location:** Saudi
- ▶ **Project Name:** Under Balance Drilling

Well Testing Manifold

Well Testing manifold is a device that regulates the pressure and flow rate in the well through the intercepted diameter of a throttle valve. It is mainly used in the wellhead testing stage. Test manifold, often connected together with surface safety valves(SSV) and data heads, safely control parameters such as pressure, temperature and other parameters of the outgoing medium.

Product Scope

- **Size:** 2-1/16", 2-9/16", 3-1/8", 3-1/16", 4-1/16"
- **Pressure:** 5000psi, 10000psi, 15000psi, 20000psi
- **Material Level:** DD, EE, FF, HH
- **Temperature Rating:** L, N, P, S, T, U, V, X
- **Product Specification Level:** PSL3 (G)
- **Performance Requirement:** PR1, PR2



Client performance

Well testing manifold in Saudi



Well testing manifold in Iraq

Electric Choke Manifold

The role of the electric choke manifold is to control the flow and pressure of the fluid. The nozzle manifold adopts the modular structure of electric gate valve, which is specially used for oil and gas well testing.

Product Scope

- **Size:** 2-1/16", 2-9/16", 3-1/8", 3-1/16", 4-1/16"
- **Pressure:** 5000psi, 10000psi, 15000psi, 20000psi
- **Material Level:** DD, EE, FF, HH
- **Temperature Rating:** L, N, P, S, T, U, V, X
- **Product Specification Level:** PSL3 (G)
- **Performance Requirement:** PR1, PR2

Product Feature

- Standard dual choke system: a fixed throttle valve with pressure relief valve and a manual choke valve are installed on both sides. The throttle is lined with carbide and has strong wear resistance and corrosion resistance.
- Gate valve adopts electric actuator, bidirectional metal seal design, long service life, remote control is possible.
- The upstream and downstream of the nozzle manifold may be fitted with data heads, which may be equipped with pressure ports, temperature ports, connected pressure gauges, pressure sensors and chemical injection devices.



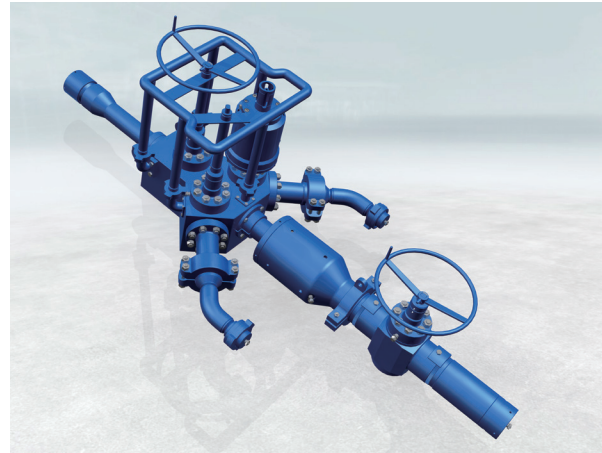
Xinjiang Project

Surface Test Tree

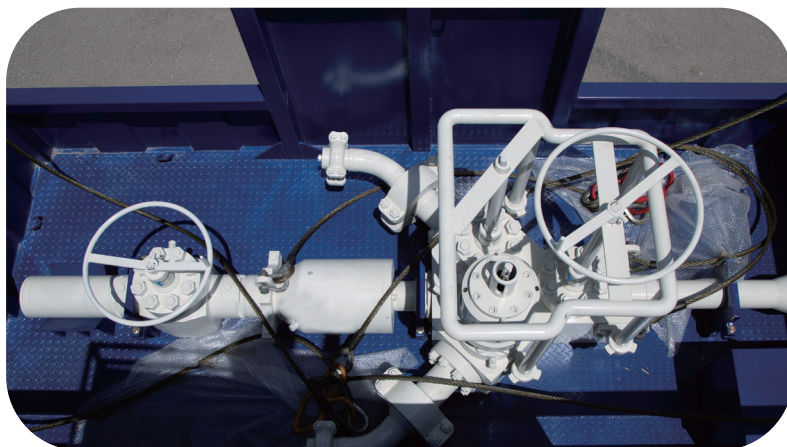
Choke manifold, also known as the flow head device, is installed at the top of the test string to support the test line and can be safely controlled and sampled to measure the pressure, temperature, oil, gas, and water density of the fluid to the surface, thereby budgeting production.

Product Scope

- **Size:** 3-1/16", 4-1/16", 5-1/8"
- **Pressure:** 5000psi, 10000psi, 15000psi
- **Material Level:** DD, EE, FF, HH
- **Temperature Rating:** L, N, P, S, T, U, V
- **Product Specification Level:** PSL3(G)
- **Performance Requirement:** PR1, PR2



Client performance



- ▶ **User:** SLB
- ▶ **Size:** 3-1/16"
- ▶ **Pressure:** 15000 psi
- ▶ **Project Location:** The Far East
- ▶ **Project Name:** Well Control Project

Seller will replace without charge or refund the purchase price of products provided by Seller which prove to be defective in material or workmanship, provided in each case that the product is properly installed and is used in the service for which Seller recommends it and that written claim, specifying the alleged defect, is presented to the Seller within 18 months from the date of shipment or 12 months after installation, whichever occurs first. Seller shall in no event bear any labor, equipment, engineering or other costs incurred in connection with repair or replacement. The warranty stated in this paragraph is in lieu of all other warranties, either expressed or implied. With respect to warranties, this paragraph states Buyer's exclusive remedy and seller's exclusive liability.

Neway Overseas Subsidiaries

- ▶ **NOE China**
Address : 999 Xiangjiang Road, High-tech Zone, Suzhou
Tel : 0512-6708-1952
Fax: 0512-66618930-4715
E-mail: noe@neway.com.cn
Postcode: 215129
- ▶ **NOE Singapore**
Address :100G Pasir Panjang Road, #08-21/22, Interlocal Centre, Singapore
Tel : +65 6684 7968
Fax : +65 6684 7970
E-mail : noe@neway.com.cn
Postcode :118523
- ▶ **NOE America**
Address : 9757 Stafford Centre Drive, Stafford TX
Tel : +281-969-5850
E-mail : NOEsales@newayvalve.com
Postcode: 77477
- ▶ **NOE Dubai**
Address :3606 JBC 1, Cluster G, Jumeirah Lake Towers, Dubai, UAE
Tel : +971 4 4562947
Fax : +971 4 4563063
E-mail : noe.ae@newayvalve.com
Postcode: 214954
- ▶ **NOE Vietnam**
Address : Lot 12, N11 street, Dat Do I industrial Park, Phuoc Long Tho commune
Tel : 84-38-6220454
E-mail : noe@neway.com.cn
Postcode :790000